



# **PANTHER NATION**

## **NRHEG PUBLIC SCHOOLS**

**School and Community Activities and Information**

**PROUDLY EMBRACING THE COMMUNITIES OF: NEW RICHLAND, HARTLAND, ELLENDALE, AND GENEVA**

# **2025 Winter Activities**

**January - March 2025**





## Stay **Connected** with the NRHEG School District!

[www.nrheg.k12.mn.us](http://www.nrheg.k12.mn.us)



**FACEBOOK**

NRHEG Elementary School  
 NRHEG Secondary School  
 NRHEG Community Education  
 NRHEG ECFE

## TABLE OF CONTENTS

- Adult Programming 15 - 17
- CE Registration info 18-19
- District Newsletter 3
- Early Childhood 5-7, 9
- Elementary School Info 8
- Secondary School Info 14
- General Com. Ed Info 4
- MSHSL Activities/Athletics 14
- School Age Care 9
- Student Enrichment 9-10, 16
- Special Events 6, 8
- Youth Recreation 11-13

### DISTRICT CONTACT INFORMATION:

**Our Mission:** Empowering students with knowledge and skills to succeed.

**Our Vision:** To be the school district of choice, inspiring excellence in academics, arts, and activities.

<p><b>DISTRICT OFFICE:</b>          Superintendent: Michael Meihak <a href="mailto:mmeihak@nrheg.k12.mn.us">mmeihak@nrheg.k12.mn.us</a>          Admin. Assistant: Sue Kulseth. <a href="mailto:skulseth@nrheg.k12.mn.us">skulseth@nrheg.k12.mn.us</a>          Phone: 507-465-3206 Fax: 507-465-8633</p>	<p><b>COMMUNITY EDUCATION:</b>          Director: Macy Whiteside <a href="mailto:mwhiteside@nrheg.k12.mn.us">mwhiteside@nrheg.k12.mn.us</a>          Phone: 507-417-2667 Fax: 507-465-8633          Assistant: Stacy Hutchens: <a href="mailto:shutchens@nrheg.k12.mn.us">shutchens@nrheg.k12.mn.us</a></p>
<p><b>ELEMENTARY SCHOOL:</b>          Elementary Principal: Craig Kopetzki  <a href="mailto:ckopetzki@nrheg.k12.mn.us">ckopetzki@nrheg.k12.mn.us</a>          Admin. Assistant: Jean Greenwood  <a href="mailto:jgreenwo@nrheg.k12.mn.us">jgreenwo@nrheg.k12.mn.us</a> Phone: 507-684-3181          Fax: 507-684-2108</p>	<p><b>SECONDARY SCHOOL:</b>          Secondary Principal: Grant Berg  <a href="mailto:gberg@nrheg@nrheg.k12.mn.us">gberg@nrheg@nrheg.k12.mn.us</a>          Admin Assistant: Nikki Cromwell <a href="mailto:ncromwell@nrheg.k12.mn.us">ncromwell@nrheg.k12.mn.us</a>          Phone: 507-465-3205 Fax: 507-465-8633</p>
<p><b>ATHLETICS / ACTIVITIES:</b>          Athletic Director: Dan Stork  <a href="mailto:dstork@nrheg.k12.mn.us">dstork@nrheg.k12.mn.us</a>          Phone: 507-417-2628 Fax: 507-465-8633</p>	<p><b>TRANSPORTATION:</b>          Site Manager: Dan Schmidt  <a href="mailto:dschmidt@nrheg.k12.mn.us">dschmidt@nrheg.k12.mn.us</a>          Phone: 507-465-3205</p>

## How to Become a Community Education Instructor:

Do you have a special talent or skill to share with others? Every year NRHEG Community Education seeks individuals to hire as independent contractors to instruct our classes (youth or adult). While some of our instructors are professionals, we actively recruit people who have hobbies or expertise in an area, which can be developed into a class or workshop! Currently, we are looking for a co-dance instructor for our Youth Dance Program (serves approx. 65 children per season) located in New Richland or Ellendale for our surrounding communities!

Call Macy at (507) 417-2667, email: [mwhiteside@nrheg.k12.mn.us](mailto:mwhiteside@nrheg.k12.mn.us) or stop in-person (Monday-Thursday 8:00-3:00pm at the New Richland Secondary School) to learn more about our instructor qualifications and responsibilities.

# NRHEG District Newsletter January 2025

## A Letter from the Superintendent

### Giving Your All, Every Day



At NRHEG Public Schools, we often talk about Panther Pride—a deep sense of commitment to excellence, perseverance, and unity that defines our school community. As we move through this school year, I want to encourage all of us to embrace the idea of giving our all every day. Whether you're a student striving for success, a teacher inspiring learning, or a parent supporting from the sidelines, every effort matters.

Giving your all doesn't mean being perfect; it means showing up with purpose, determination, and a willingness to push through challenges. For our students, this might look like giving your best effort on an assignment, asking questions in class, or being a good teammate during practice. For our staff, it means continuing to bring energy and passion to teaching and leading, even on days when the work feels tough. For parents and guardians, it's the consistent encouragement and involvement that show our students they're supported both at school and at home.

Every one of us has a role in making NRHEG a place where excellence is the standard. When we give our all, we create a ripple effect. A student's determination inspires a teacher, who in turn, motivates another student. A parent's enthusiasm at an event fuels the pride and camaraderie that make our school special. Panther Pride isn't just about wearing black and red on game day—it's about showing up with heart, every day, for each other and for our goals.

As we celebrate milestones, tackle challenges, and work toward the future, let's keep this in mind: giving our all every day is how we grow as individuals and as a community. Together, we can continue building a culture where every student has the opportunity to thrive, every teacher feels valued, and every family is part of something greater. Thank you for all you do to make NRHEG Public Schools an exceptional place to learn, grow, and succeed. Let's show our Panther Pride by giving our best each and every day!

Michael Meihak  
Superintendent  
NRHEG Schools ISD#2168



## What is Community Education?

Community Education is an opportunity for local citizens, community schools, agencies and institutions to become active partners in addressing education and community concerns. Community Education embraces these beliefs: education is a lifelong process, everyone in the community shares a responsibility for the mission of educating all members of the community and citizens have a right and responsibility to link the needs of the resources to improve their community.

## Services



### Youth & Adult Programming

Classes provide youth and adults with educational and recreational programs to gain new skills and knowledge while building strong connections and empowering the community

### Early Childhood Services

- Early Childhood Family Education (ECFE)
- Panther Preschool
- Early Childhood Screening

### Facilities Rental

Need gathering space? We have it!

### Facility Scheduling & Requests

Requests for the use of school facilities are made through the Community Education Office. Please contact the office at 507-417-2667 and ask for a facility use form or go to the NRHEG website and find the form under Community Education. A minimum of three week notice for use of facilities is required.

## BECOME AN INSTRUCTOR!!

Share your talents with Community Education.

Community Education classes are flexible and designed to meet the needs of our instructors and the community. Volunteer and salaried positions are available.

For more information call: 507-417-2667

email: [mwhiteside@nrheg.k12.mn.us](mailto:mwhiteside@nrheg.k12.mn.us)

**YOUTH DEVELOPMENT SCHOLARSHIPS:** Through the generous donation from the EF Johnson Foundation, we are able to offer \$50.00 scholarships per child for summer & fall programming – visit our website for guidelines and download the application or get one from your school office or email Macy at [mwhiteside@nrheg.k12.mn.us](mailto:mwhiteside@nrheg.k12.mn.us)! *Income eligibility based off of the free/reduced lunch scale.*



## BIRTHDAY PARTY GYM RENTAL

Is your child having a large birthday party this year and you don't want to host it at home? Then give us a call about renting our school gym & cafeteria! We help clean up the mess and provide your birthday party crew with basketballs, dodgeballs, footballs, a parachute, hoola-hoops, jump ropes, kick balls, etc. Gym Party Rental fee is \$60 for 2 hours of gym time for free play/games and cafeteria time to eat. Call 507-417-2667 or email [mwhiteside@nrheg.k12.mn.us](mailto:mwhiteside@nrheg.k12.mn.us) to check on gym availability (Ellendale or New Richland) and to schedule your party!



Do you have a young child at home?



**IS YOUR FAMILY INCLUDED ON THE SCHOOL DISTRICT CENSUS?**

Has there been a birth in your family? Have you recently moved into your neighborhood? Is there a new family in your neighborhood? ISD 2168 wants all families with young children to know about our programs and activities. Being on the school census also ensures that you will receive information regarding Early Childhood Family Education classes, Early Childhood Screening, and the Panther Preschool program information. In addition, funding for our Early Childhood Programs is based on the number of children on our census.

It is important that everyone be counted! To be added to the census, please call Karla at our school office, 417-2605 or find the form on our Community Education Website at [www.nrheg.k12.mn.us](http://www.nrheg.k12.mn.us) under the community education tab.

Early childhood screening is mandated by the State of Minnesota for all children entering Kindergarten. The best time to have your child screened is between the ages of 3 and 4.



**A navigator connecting pregnant and parenting families with young children (birth-8 years old) with services in their local communities that empower families to be healthy and safe.**

**m** MINNESOTA Help Me Connect is an interagency collaboration between Minnesota's Departments of Education, Health and Human Services. For more information, visit

<https://helpmeconnect.web.health.state.mn.us/HelpMeConnect/>



**Early Childhood SCREENING**



Are you concerned about your child's development? Help Me Grow is a group of service providers working together to help area families. They provide free early intervention referral services to help families find and coordinate resources for their children aged birth to 5 years old.

- Help Me. Grow provides. Resources for families to understand developmental milestones and learn if there are concerns. This helps families take the lead in seeking additional support or referring their child for a comprehensive, confidential screening or evaluation at no cost.

- Help Me Grow is an interagency initiative of the State of Minnesota Department of Education, Department of Health and Department of Human Services. We partner with all local service. agencies.

Early Childhood Screening is FREE and the earlier the BETTER! When your child turns 3, please call 507-417-2667 to schedule a screening appointment.

UPCOMING SCREENING DATES: Friday March 14 & Friday April 11 at the United Methodist Church in Ellendale

# Early Childhood Family Education

**Adventures In Parenting Class:** This multi-age class focuses on a variety of family issues and activities. Topics covered in parent discussion time are determined through discussion of parent needs/interests, current research, and teacher suggestions including child development, school readiness, temperament, guiding behavior, and sibling relationships. During separation from parents, children interact with the Early Childhood staff and other children and typically have a snack, crafts, stories, music, and more time playing with peers. These classes are for preschoolers aged 2 ½ -5 years old and their parents, grandparents, or caregivers.

**WINTER/SPRING 2024 Session** Classes will be held Tuesday evenings in the New Richland or Ellendale Preschool classroom. 5:45-7:15pm. \$15 per family. Class locations may rotate between Ellendale and New Richland depending on participants' preferences – March 4<sup>th</sup> class will be located in New Richland room #C115 (enter south east playground doors #2S).  
Classes are: March 11, 18. April 1, 8, 15, 29. May 6



## GRANDPARENT'S NIGHT

Children Ages: 2 ½ - 7 years w/ adult

A special time for grandma and/or grandpa (or special grandparent-like friend) to spend time with their favorite little person! You will make a project, play a game, read a book, and eat a snack together while making each other feel extra-special, as usual!

Cost: \$5.00 per child

Date: Tues., Jan. 28

Time: 6:00-7:15pm.

Location: Meet in the preschool classroom (C115). Enter through door #1E. Register by: Tuesday, Jan. 21 2025



# NRHEG Panther

## PRESCHOOL



All-day School  
Age Care  
Daycare info.  
can be found on  
page 9

**NRHEG Community Education and our School Readiness Programs take pride in investing in our youngest learners and in preparing children and families for success in school.**

Registration Forms will be accepted starting Monday, March 10th.

NRHEG Panther Preschool provides programming designed to help early childhood learners prepare for Kindergarten. Our program is designed for all families. Three year old students are in the New Richland Secondary School or the Ellendale Elementary School and will attend 2 day-a-week programming in the morning. Four year old students are located in the New Richland Secondary School or the Ellendale Elementary School and have options of a 3 or 4 day-a-week program in the morning or afternoon.

Register early:  
classes fill up  
fast!

### Why do parents choose our program?

**Our Students:** Children who attend our preschool program enter Kindergarten with foundational skills (social-emotional & academic) and experiences that will help them to be successful in school.

**Our Teachers:** State licensed & highly qualified in early childhood education, our teachers are dedicated and passionate about our earliest learners.

**Our Curriculum & Assessments:** Our 123-Learn curriculum is Parent-Aware Approved, research based, developmentally appropriate, and aligned with the MN state learning standards. We utilize TS Gold Assessment (Parent Aware approved) throughout the year along with our KRAT (Kindergarten Readiness Assessment Tool).

**Our families:** Families are valued partners with the school in supporting their child's learning at home.

**Focus on the Transition into school:** Our programs are integrated and aligned with Bridges/Kindergarten to make that transition into school smooth



## PANTHER PRESCHOOL REGISTRATION & OPEN HOUSE



Registration & Open House for the 2025-26 school year will be on Monday, March 17 6:00-7:00pm in New Richland (enter door #2S) or Wednesday March 19 4:15-5:15pm in Ellendale (enter north doors). You can attend either site and register for either site on these days.

Swing in during this time to register and check out the classroom, meet the teachers, do a craft, get a free book/activity, and have fun playing with new friends! The registration fee will only be \$20 if you attend one of the Open Houses or register before Friday, March 21<sup>st</sup>. The registration fee after Friday March 21 is \$35 per child.

Registration information will be available for the 2025-26 preschool program on our website starting Monday, March 10. Please check our website: [www.nrheg.k12.mn.us](http://www.nrheg.k12.mn.us). Go to the Community Education tab, click on Early Learning, then Registration Forms.



# Ellendale Elementary School Information

## REMINDERS OF UPCOMING DATES & EVENTS:

### JANUARY

- 1 - New Year's Day & last day of Winter Break.
- 2 - School resumes
- 20 - No School, Teacher Planning Day
- 21 - No School, Staff Development Day
- 28 & 30 - Parent/Teacher conferences (4:00-8:00pm)

### FEBRUARY

- 17 - No School, Staff Development Day

### MARCH

- 25 - Bridges/Kindergarten Registration
- 28 - No School, Teacher Planning Day

Parents – Please take time to read to or with your student each day.



NRHEG  
ELEMENTARY  
SCHOOL



600 School St, Ellendale, MN 56026

March 25th 2024  
3:30-5:30

## NRHEG Elementary

## BRIDGES & KINDERGARTEN REGISTRATION

PLEASE JOIN US AS WE WELCOME ALL INCOMING KINDERGARTENERS FOR THE 2025-2026 SCHOOL YEAR.

### WHAT HAPPENS AT REGISTRATION?

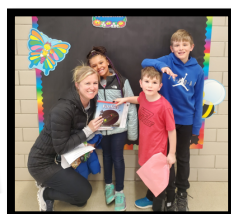
During this time you will visit the elementary school, tour classrooms, ask questions and meet the Bridges and Kindergarten Teachers. When you are all done stop by the Community Education table to receive your free book & craft for attending!

### Please bring with you:

- Immunization Record
- Official Birth Certificate
- Registration Forms

If you have questions please call  
**507-684-3181**

Please Enter Using Main Door (I-E)



Books made available through the Southern Minnesota Initiative Foundation Early Literacy Grant





# School Age Care



AGES: 3 YEARS - 5<sup>TH</sup> GRADE



## School Year 2024-25

Hours: 6:45am- to 5:45pm Monday-Friday

New Richland & Ellendale Schools

- \*All day care available for children ages 3-5 years old in New Richland (enrolled in Panther Preschool)
- \* Before / After School care for B/K – 5<sup>th</sup> grade in Ellendale and New Richland Schools
- \*Non-School day care located in New Richland (preschool-5<sup>th</sup> grade)

- \*Preschool aged Before & After-School all-day Care
- \*B/K-5<sup>th</sup> grade Before & After-School Care.
- \*Kindergarten Readiness Support
- \*Homework help upon request

- \*Fun-Recreational Activities
- \*Breakfast, most Lunches & Snacks Included
- \*Care on Non-School & Summer Days
- \*Arts & Crafts

Cost varies based on your hours needed per week  
visit our website at:  
[www.nrheg.k12.mn.us/Page/3214](http://www.nrheg.k12.mn.us/Page/3214)

Please call or email Macy at [mwhiteside@nrheg.k12.mn.us](mailto:mwhiteside@nrheg.k12.mn.us) 507-417-2667 or 507-417-2626 for more information



Calling all LEGO® Masters! We can't wait to see all your magnificent creations at LEGO® Club

What is LEGO® Club? Our LEGO® Club is all about sharing your ideas and creating new and fantastical creatures, vehicles, and structures. There will be time for imaginative creations along with individual and group challenges and contests to put your STEAM skills to the test!

### Winter/Spring Session Dates:

Grades 1-2: Fridays - Feb. 7, March 7, April 4, May 2

Grades 3-5: Fridays - Feb. 21, March 21, April 25, May 9

Time: 3:15-4:30pm.

Cost: \$5.00 per person for all 4 sessions

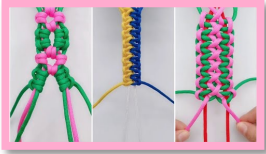
Location: Ellendale Media Center.

Register by: Fri. Jan. 31

# AFTER-SCHOOL LEGO® CLUB

## The Braided Masterminds After School Club

Grades: 3-5



Crocheting and needle point is not for you? Join our after-school club in Ellendale to give braiding a try! Braiding not only builds fine motor skills and cognitive reasoning, but it's also fun! Come and join us for an hour after school once a month to make some really neat creations and learn some cool braiding designs with instructor Deb Bently! *Don't forget to bring an after-school snack for yourself!*

**Dates:** Thursdays - January 23, February 27, March 27, April 24

**Times:** 3:15-4:15pm      **Cost:** \$5.00 per person

**Location:** Ellendale Media Center

**Register by:** Friday, January 17

## Holiday Gnome & Shaker



We are so excited to have you join us on Saturday, February 8<sup>th</sup> from 10:00-12:00pm for our Holiday Gnome class! He is super adorable and will be a great addition for Valentine's Day (or any holiday) décor - the best part - change his hat to fit any holiday! Bring your mom, grandma, or someone special and learn our simple techniques during this step-by-step process to create your adorable Gnome. *Afterwards, take your*

*someone special out on a lunch date for Valentine's Day!*

**Date:** Saturday, Feb. 8th

**Time:** 10:00-12:00pm

**Ages:** 1<sup>st</sup> grade and up (with adult). Or 4<sup>th</sup> grade and up without an adult.

**Location:** NR Secondary, D 153

**Register by:** Wednesday, Jan. 29<sup>th</sup>

**Cost:** \$26 per Gnome/shaker (please specify how many Gnomes you would like to make on the registration form).

**Instructor:** Judy Tweeten

## After-School Art Club

for students in 2-6<sup>th</sup> grade.

All classes will begin & end in the Community Education room at the Secondary Building, room #C113.

### Session 1: String Art

Cost: \$20

Date: Thurs. Jan. 16

Time: 3:30-5:30pm

Register by: Thurs. Jan. 2<sup>nd</sup>

Join us in creating your very own string-art. You will make one of 3 different designs and will be walked through this step-by-step process so you too can learn how to make string art!



### Session 2: Valentine's Day Gift for someone special

Cost: \$15

Date: Tuesday, February 11

Time: 3:30-5:00pm

Register by: Mon. Feb 3

Let us help you make that special adult in your life a memorable gift for Valentine's Day! This handprint wall hanging is a gift that will be cherished forever! Your child will have a variety of different designs to choose from.



### Session 3: Beach Zen Garden

Cost: \$25

Date: Tuesday, March 4

Time: 3:30-4:45pm

Register by: Thurs. Feb 20

Have a relaxing good time with us while your design and create your very own Zen Garden!



# NRHSG

## COMPETITION CHEERLEADING

### CHEER TEAMS

Varsity (Gr. 7-12)

### PROGRAM DATES

June 2025-February 2026

### REGISTRATION

Informational Meeting / Registration:  
Monday, March 10 2025  
7:00pm.

New Richland High School Commons (enter east door #1E)

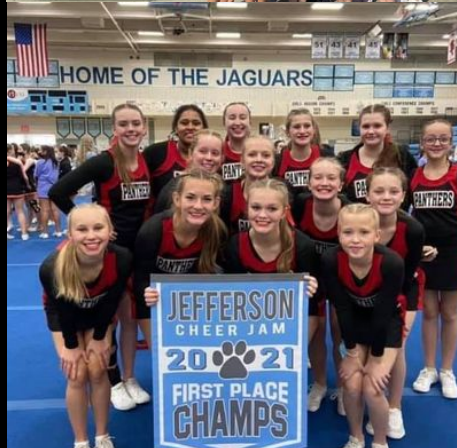
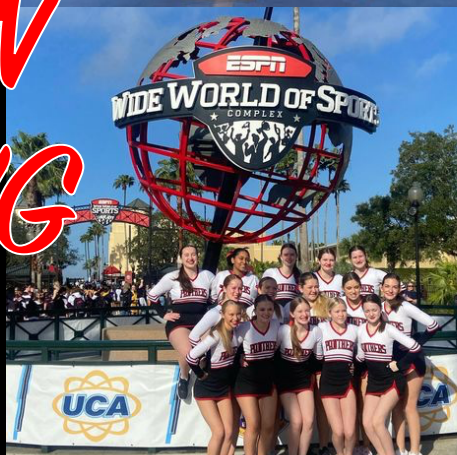
### COST

Due to the nature of this program and pricing being dependent upon uniform needs, 2025-2026 competition fees, choreography, etc. pricing will be better estimated later in the spring. Please email [panthercheercoaches@gmail.com](mailto:panthercheercoaches@gmail.com) for more information.

*This program is a large commitment and requires those that are competing to be at all practices and competitions as your team counts on you! Middle School cheerleaders practice approximately once per week, Varsity approximately twice.*

*Competition teams will compete in approximately 5 competitions throughout the season. If you are interested in more information please contact [panthercheercoaches@gmail.com](mailto:panthercheercoaches@gmail.com) and attend the registration meeting on Monday, March 10<sup>th</sup>.*

***Registrations are accepted until May 30<sup>th</sup>.***





# Panther Softball Pitching Camp 2025

Brittany Stewart, former head softball coach at Gustavus Adolphus College, and current coach at Macalester will be running a pitching camp on Saturday, January 18, 2025. It doesn't matter if your child is a new or experienced pitcher, new skills will be taught as well as building on the skills your player currently has! Come have fun and get to the next level by working with Brittany.

**Please bring someone to catch for you** (pitching session).

**Bring your own bat if you have one** (hitting session)

**Session 1:** for girls in 3-6<sup>th</sup> grade from 12:00-1:00pm (pitching)

**Session 2:** for girls in 7-12<sup>th</sup> grade from 1:00-2:30pm (pitching)

**Session 3:** for girls in 7-12<sup>th</sup> grade from 2:30-3:00pm (hitting)

NRHEG Secondary School South Gym

Saturday, January 18 2025

\$30 per player for pitching

\$15 per player for hitting

*Make checks payable to NRHEG Softball Boosters*

\*Send completed form and registration fee by Monday January 10<sup>th</sup> to Wendy Schultz at the Ellendale School, or give to Nikki Cromwell in the New Richland office. If you have any questions please contact Wendy Schultz at 507-416-2144 or 507-383-9831.

Name: \_\_\_\_\_

Grade: \_\_\_\_\_

Phone Number: \_\_\_\_\_

email address: \_\_\_\_\_

Parent/Guardian Signature: \_\_\_\_\_

*\*Your signature authorizes the camp staff to use their best judgment for injuries and release them from any liability for camp-related injuries.*



## NRHEG CLAY TARGET TEAM

**Grades:** 6-12. Available in both fall and spring, this league is for students who have a valid gun safety certificate and have an interest in shooting sports. This is the fastest growing high school sport in MN! The State Class Championship represents the largest youth trap shoot in the nation and the MSHSL State Tournament is currently the only one of its kind in the nation.

**Fall League:** begins in mid-September and goes for 6 weeks with no state shoot at the end. It's a great way for students to introduce themselves to the sport before the Spring League. Registration for the Fall League begins in August so being on the mailing list before school starts is very important. Shoots are held at the Owatonna Gun Club. Registration covers 2 rounds of targets per week for the 6-week season, the cost of league registration, a meal at our fun shoot, and a team shirt.

**Spring League:** involves weekly shoots one night per week starting the first week of April and going through the MSHSL State Tournament in late June. Shoots are held at the Owatonna Gun Club. Registration covers 2 rounds of targets per week for the 10-week season, the cost of league registration, state shoot registration, a meal at our fun shoot, and a team shirt.

**All students provide their own firearms, ammunition, and safety gear. Students from neighboring school districts without a team or who are home schooled are also welcome to join us!**

For more information contact Dan Sorum at 507-417-2627 or email him at [dsorum@nrheg.k12.mn.us](mailto:dsorum@nrheg.k12.mn.us). If you wish to be placed on the team mailing list email Mr. Sorum your contact information ahead of time.

ALL FEES need to be sent to Mr. Sorum (306 Ash Ave. South, New Richland, MN 56072) with checks made out to NRHEG Community Education with Clay Target in the memo. Registration is set in January so getting on the mailing list is important for up to date information.

Join the Ambulance Relief Association's  
**Sweetheart BINGO NIGHT!**

**Saturday, February 15<sup>th</sup>**  
New Richland City Hall

\$15 per card for the night gives you 15 games PLUS a final blackout game  
Cash prizes

Fun For The Whole Family!

Proceeds will go towards the Ambulance Relief Association



### NEW RICHLAND AMBULANCE

COMMUNITY EDUCATION & TRAINING

OFFERS THE FOLLOWING COURSE:



If interested:

Message the Ambulance Facebook page, email [nramb@cityofnewrichlandmn.gov](mailto:nramb@cityofnewrichlandmn.gov) or call 507-475-8410

REGISTER ONLINE!



[www.cityofnewrichlandmn.com](http://www.cityofnewrichlandmn.com)  
Click on "CPR Training Registration"



## HAM BINGO

**Saturday, April 12<sup>th</sup>**

at New Richland City Hall Community Room

7:00 pm (doors open for seating at 6:30pm).

\$15 per card for the night gives you 15 games PLUS a final blackout game. Each game wins an Easter Ham.

THANK YOU FOR YOUR COMMUNITY SUPPORT!

# SECONDARY SCHOOL INFORMATION

## REMINDERS OF UPCOMING DATES & EVENTS

### JANUARY

- 1 - last day of winter break
- 2 - School resumes
- 17 - end of 2<sup>nd</sup> Quarter
- 20 - No School, Teacher Planning Day
- 21 - No School, Staff Development Day

### FEBRUARY

- 17 - No School, Staff Development Day
- 24 - Secondary Parent/Teacher Conferences (4:00-8:00pm)

### MARCH

- 27 - end of 3<sup>rd</sup> Quarter
- 28 - No School, Teacher Planning Day



## SPRING SPORTS



Information for 7-12<sup>TH</sup> Grade Students

GIRLS SOFTBALL

BOYS BASEBALL

BOYS & GIRLS TRACK AND FIELD

BOYS & GIRLS GOLF

Registration information will be sent to all families with students in grades 7-12 in late February. There will also be a spring sports meeting in early March. Watch for more details and this email soon!

More information can be found at:  
<https://www.nrheg.k12.mn.us/domain/732>





**PRECISION**  
DRIVING CENTER  
A DIVISION OF ST. CLOUD STATE UNIVERSITY



**DRIVER**  
DISCOUNT  
PROGRAM

## GET UP TO **10% OFF YOUR CAR INSURANCE** **FOR 3 YEARS!**

To register for these or other classes in your area call:  
320-308-1400 or 888-234-1294

You can also register online at [www.DriverDiscountProgram.com](http://www.DriverDiscountProgram.com)

**4-Hour in-person classes offered at this location:**

**NRHEG High School**  
306 Ash Ave. South  
New Richland, MN 56072

March 10  
5:30-9:30pm

*Enter through main East Entrance  
Door #1E*



320.308.1400 PrecisionDrivingCenter.com 1805 U.S. Highway 10, St. Cloud, MN 56304

Safety Programs | Skill Training | Custom Courses

# LANDSCAPE PAINTING INSTRUCTION

Do you want to learn the techniques needed to create a beautiful landscape??

Join us for one, two, or three classes and create your own masterpiece with step-by-step instruction from one of our VERY TALENTED NRHEG High School Students, Brady Koopal.

Brady already has experience teaching his techniques to fellow students, and now wants to teach you!!

For Ages 16 +

10 minimum, 20 maximum for class to run



Mountain Landscape

Date: January 17

Time: 5:45-8:30pm

Location: D153, New Richland High School

Cost: \$20 per person



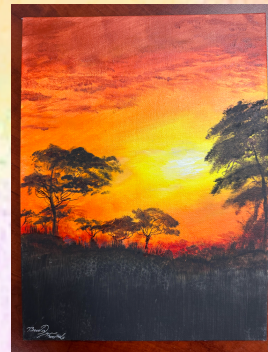
Valley Landscape

Date: February 18

Time: 5:45-8:30pm

Location: D153, New Richland High School

Cost: \$20 per person



Sunset Landscape

Date: March 17

Time: 5:45-8:30pm

Location: D153, New Richland High School

Cost: \$20 per person

\$55.00 total if you sign up for all 3 classes

## MUSIC LESSONS

Continue improving on your instrument or learn a new instrument this summer with Mr. Schaefer through Community Ed!

**\$30 FOR A HALF-HOUR LESSON.  
WEEKLY LESSONS FROM  
JUNE 10TH - AUGUST 30TH**

**• OTHER RATES AVAILABLE BASED ON NEED, INTEREST, AND FREQUENCY**

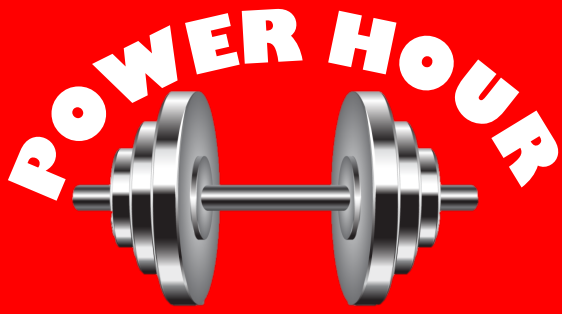
Open to incoming 5th- 12th Grade Students

Instruments Offered:

- Band Instruments (available for rent)
- Piano
- Electric/Acoustic Guitar
- Bass Guitar
- Drumset
- Missing One? Just ask!

Interested?  
Contact Mr. Schaefer  
sschaefer@nrheg.k12.mn.us  
507-417-2618





# TOTAL BODY FITNESS

**MONDAYS - WEDNESDAYS - FRIDAYS** 5:00AM TO 6:00AM

LOCATION: NR Secondary School weight room, enter through door #17

**ALL FITNESS LEVELS ARE WELCOME!** Join Emily for a unique & customized group workout experience! She understands that every person is unique and every goal is personal, so by working together we can build healthy, happy people! Our unique personalized workout classes offer a wide variety of movements, routines, and challenges based on the strengths of the coach, the equipment available to us and the spaces we are provided. This is a truly customized group fitness class that offers multiple workout options 3 days a week so eventually you will discover multiple options/pathways within each of our workouts to help you achieve your goals!

**Session 4** Dates: Dec. 30-Feb. 28 \$85 per person / 9-weeks

**Session 5** Dates: March 3 – April 25 \$75 per person / 8-weeks

## OPEN GYM Sundays

### SCHEDULE

E.O. Sun. Jan – March. 2-4pm

### New Richland

Jan. 26 Feb. 9  
March 9

### Ellendale

Jan. 5 Feb. 23  
March 23

### EQUIPMENT AVAILABLE:

2 pickleball courts (set up upon request)  
Basketballs Kickballs & bases  
Misc. equipment

### FEE:

Daily Admission: \$1.00 per person

*Children under the ages of 8 years must be accompanied by a responsible adult or older sibling. NO STREET SHOES (tennis shoes only). Enter door #6 in New Richland & Door #8 in Ellendale to sign in.*



## Indoor Walking

Join us for the walking program in the New Richland or Ellendale building!

You will need a Panther walking button which must be worn while walking. You will receive a walking button and building instructions upon registering in person at the Ellendale or New Richland school office. Please contact Macy at 507-417-2667 if you have additional questions!

**Time:** 6:45-7:30am and/or 3:30-7:30pm

**Dates:** Only available on school-days

**Cost:** \$5 per person each year to join regardless of when registering.

Ages 13+



Schedules could vary each week dependent upon Ellendale & New Richland gym availability And participants' schedule. Please join our Facebook group

"NRHEG Pickup Basketball" to find the times, dates, and locations each week

Cost: \$3 at the door

Leader: John McGinnis

## Stay Active & Independent for Life

Do you wish you could improve your strength, balance and flexibility?

Do you want to decrease your risk of falling?

This free exercise program is for you.



**Stay Active & Independent for Life (SAIL)** is an evidence-based exercise program proven to prevent falls and improve health and well-being.

Designed for older adults, SAIL classes include strength, balance, flexibility and moderate aerobic training. Performing exercises that improve strength, balance and fitness are the most important activity that adults can do to stay active and independent. Exercises can be performed seated or standing.

### NEW RICHLAND

EVERY WEDNESDAY AND FRIDAY  
9:00 – 10:00 A.M.

TRINITY LUTHERAN CHURCH  
204 FIRST STREET NW

Walk-in Registration  
This is a FREE program



Contact Marlene with questions or to pre-register:

507.450.1518  
mlevine@ccsommn.org



# COMMUNITY EDUCATION REGISTRATION FORM

*1 registration form per person please*

Participant Name: \_\_\_\_\_

Address: \_\_\_\_\_ City: \_\_\_\_\_ Zip: \_\_\_\_\_

E-mail address: \_\_\_\_\_ Cell phone: \_\_\_\_\_ Work: \_\_\_\_\_  
*(email is NECESSARY for updates and notifications of class info.)*

1. Class/Activity: \_\_\_\_\_

Date: \_\_\_\_\_ Time: \_\_\_\_\_ Fee: \_\_\_\_\_

2. Class/Activity: \_\_\_\_\_

Date: \_\_\_\_\_ Time: \_\_\_\_\_ Fee: \_\_\_\_\_

3. Class/Activity: \_\_\_\_\_

Date: \_\_\_\_\_ Time: \_\_\_\_\_ Fee: \_\_\_\_\_

How will your child be getting home after class/activity is complete(who will pick up)? \_\_\_\_\_

Where will my child be picked up & dropped off at (bus trips only)? \_\_\_\_\_

TOTAL AMOUNT ENCLOSED: \_\_\_\_\_ CHECK #(s) \_\_\_\_\_ *Checks payable to: Community Ed*

**\*\*\* Field trips will require an additional form & waiver to fill out - located in a school office or on our website.**

## PARTICIPANT EMERGENCY CONTACT INFORMATION

STUDENT GRADE: \_\_\_\_\_ AGE: \_\_\_\_\_ ALLERGIES: \_\_\_\_\_

PERTINENT MEDICAL INFORMATION : \_\_\_\_\_  
\_\_\_\_\_

1. PARENT/GUARDIAN/RELATIVE/FRIEND NAME: \_\_\_\_\_

PHONE: \_\_\_\_\_ CELL: \_\_\_\_\_

2. PARENT/GUARDIAN/RELATIVE/FRIEND NAME: \_\_\_\_\_

PHONE: \_\_\_\_\_ CELL: \_\_\_\_\_

RETURN FORM TO:  
NRHEG Community Education  
306 Ash Ave. South  
New Richland, MN 56072

MAKE CHECKS PAYABLE TO:  
NRHEG Community Education. Please  
send separate checks for sports/trips &  
enrichment classes.

You will be registered when the payment  
is received. If the class is cancelled, all  
checks will be returned or shredded.

# COMMUNITY ED. REGISTRATION POLICIES

## REGISTRATION INFORMATION

\*Prompt registration is encouraged as space is limited and classes may fill quickly. Additional class times may be added if needed.

\*Classes without enough participants will be cancelled

\*Classes are filled on a first-come, first-served basis. Waiting lists will be formed once classes are full.

\*Confirmations of class registrations are NOT sent. Please assume you are registered unless otherwise notified.

\*At this time phone and email registrations cannot be accepted. Please register via mail or in person. Include fee payment with registration form, as registrations will not be taken without payment

## REGISTRATION FEES

\*Fees for ALL activities are due at time of registration. Please register by the deadline. Make checks payable to NRHEG Community Education. Please use a separate check for each activity & put the name of the class in the memo line.

## TRANSPORTATION

\*Parents are responsible for their student's transportation unless noted otherwise. When picking up your student from class, please be prompt, as additional supervision is not provided.



NRHEG Public School District #2168  
Community Education  
Macy Whiteside, Director  
<https://www.nrheg.k12.mn.us/domain/49>  
507-417-2667  
[mwhiteside@nrheg.k12.mn.us](mailto:mwhiteside@nrheg.k12.mn.us)

## CANCELLATIONS

\*In the event of school cancellation (late start, early out, or all day) classes/activities scheduled during this time will be cancelled. All programs that are cancelled or partially cancelled due to the weather will be attempted to be made up at the convenience of the instructor and facility schedules. No refunds will be given on classes that are cancelled or partially cancelled due to the weather.

## SCHOLARSHIP INFORMATION

\*Families who qualify for the free/reduced price meal program may receive a reduction in class fees. Families may call NRHEG Community Ed to determine if they meet the criteria.

South Country Health Alliance (SCHA) members may take up to \$15 discount per class on most classes, limit of 5 discounted classes per year. If a class is less than \$15, the member may take the class free of charge. Members must be on SCHA at the time of registration, and through the duration of the class(es). Members must register in person I the Community Ed office and show SCHA card at the time of registration.



## REFUNDS

\*If a class is cancelled due to low enrollment, fees are refunded or credited to your account. No refunds will be given 72 hours prior to class start date. Refunds will not be made after the first class meeting. Bus trips are non-refundable after the registration deadline and some classes may be non-refundable due to registration requirements.

\*In the event that a class is filled or cancelled, you will receive a cancellation notice by mail, email, or telephone – your registration fee will be refunded.

## PHOTOGRAPHY DATA

\*Candid photos of participants in class or an activity may be used in NRHEG media and publications. You may decline authorization by contacting the Community Education Office at 417-2667

Does your child get FREE and reduced lunches? If so, they qualify for DISCOUNTS on our classes! Stop into the Community Ed Office (C113 Secondary Building) or email [mwhiteside@nrheg.k12.mn.us](mailto:mwhiteside@nrheg.k12.mn.us) today and fill out some paperwork!



NRHEG School District 2168  
306 Ash Ave. South  
New Richland, MN 56072

Non-Profit Organization  
U.S. Postage Paid  
Permit No. 1  
New Richland, MN 56072

Postal Customer



# NRHEG COMMUNITY EDUCATION

## Winter 2025 District Brochure



### School 2024-2025 Office Hours:

*District Office: School year: Monday-Friday 7:30-4:00pm.*

*Elementary School Office: School year: Monday-Friday 7:30-4:00pm*

*Community Education: School year: Monday-Friday 7:30-3:30pm.*

*\*contact District Office if CE Office is unavailable/closed*